

4 ROOMS

Rooftop Apartment

Apartment No. 16
7th & 8th Floor

121sqm
17sqm Balcony
+50sqm rooftop terrace

Apartment Specifications

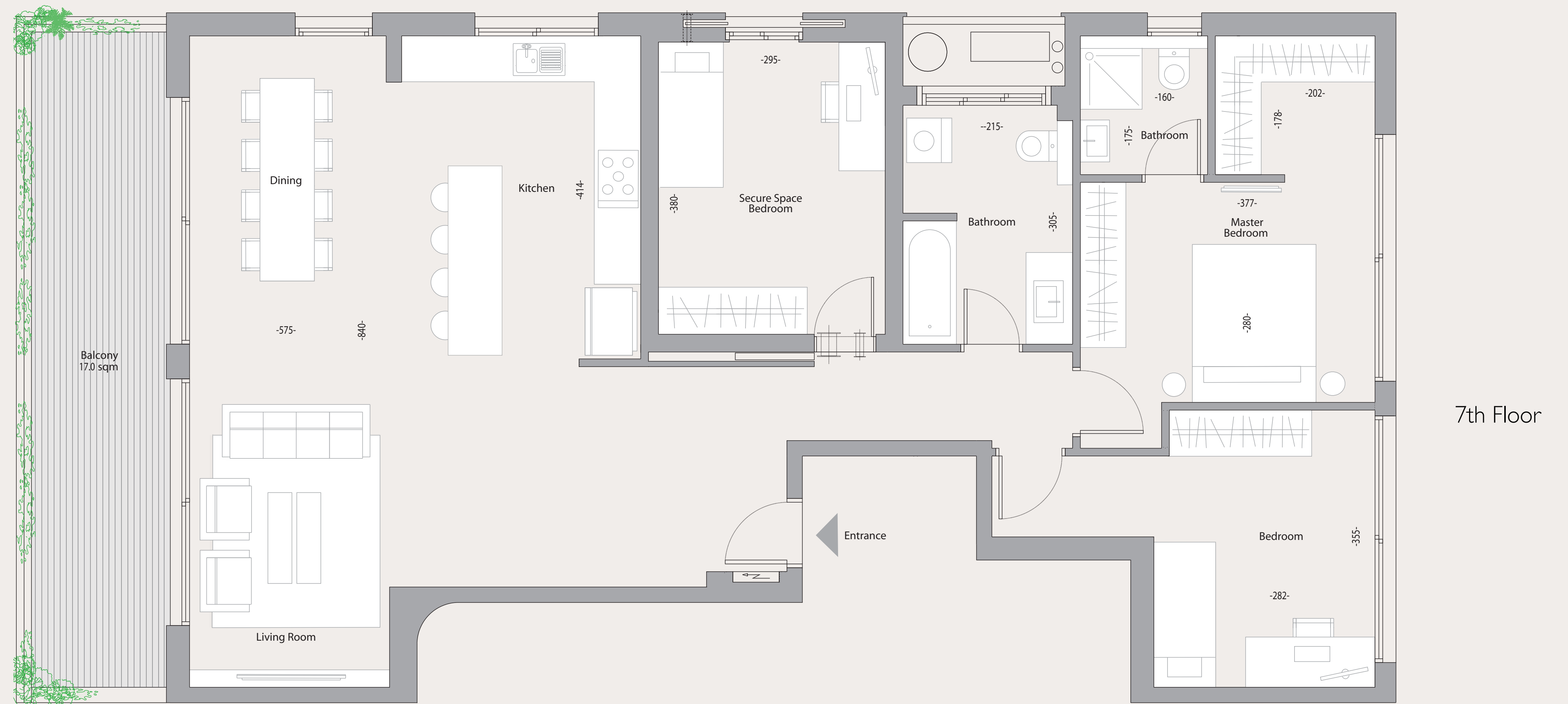
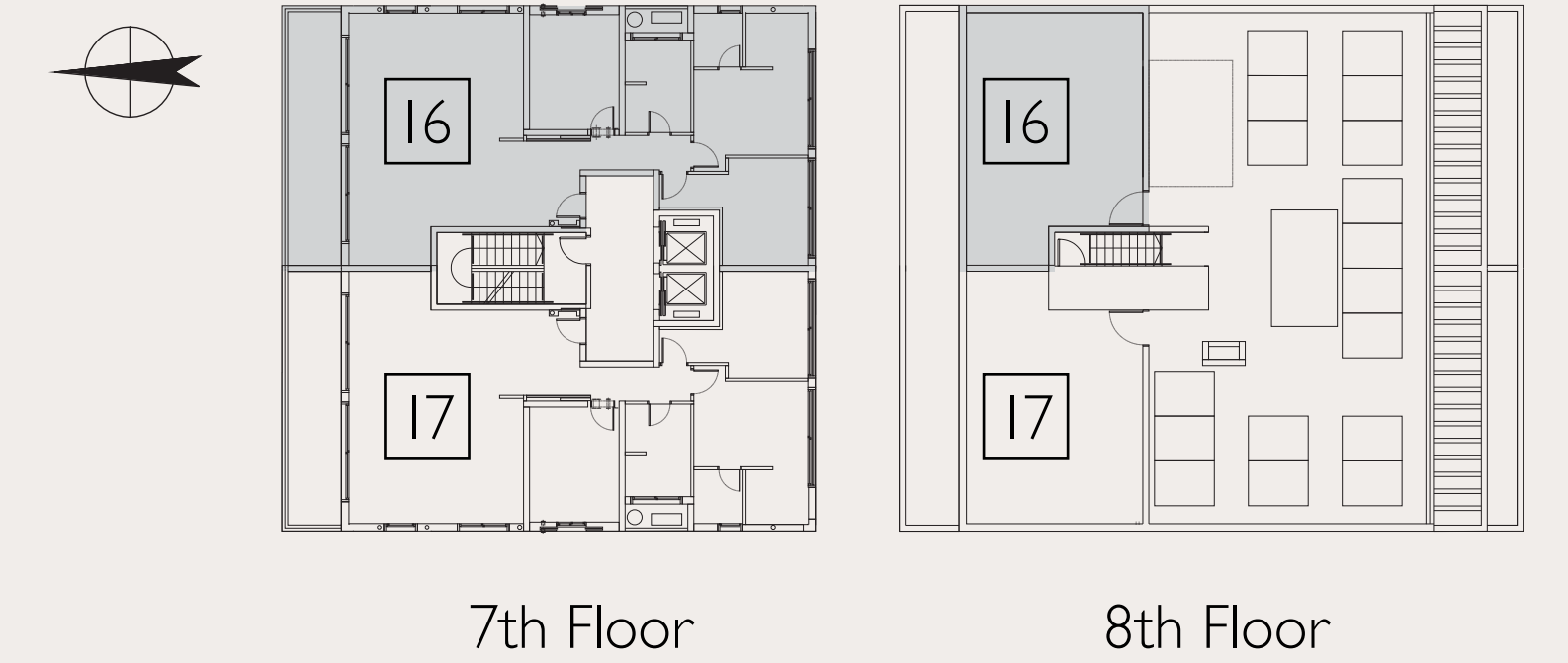
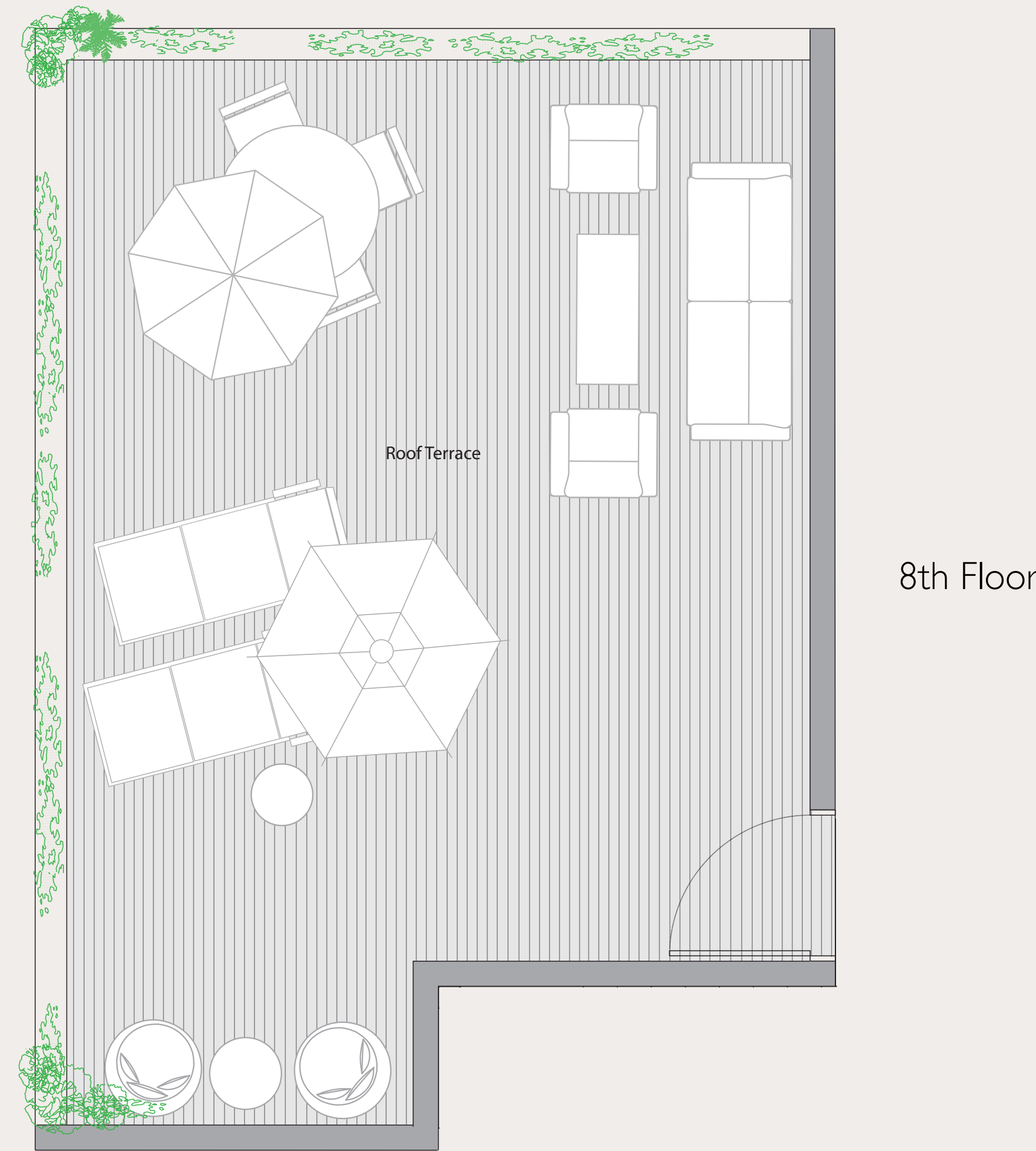
- Entrance door designed by RB-Doors
- Interior doors - Unique collection by Pandor
- Advanced climate control system
- Double glazed windows for acoustic isolation and thermal efficiency
- Electric blinds
- CCTV intercom system with color monitor
- Three-phase electric power
- Granite porcelain floor tiling (80x80cm)
- Premium outdoor tiling in balconies
- High quality electrical wiring devices by Gewiss or Bticino
- Smart Home System

Kitchen

- International-standard kitchen from a choice of leading brands
- Caesarstone countertop (various models available)
- Blanco kitchen sink
- Sleek pull-out kitchen faucet

Bathrooms

- Floor to ceiling wall tiles
- Elegant bathroom cabinet with integrated sink
- Wall-mounted toilets with concealed cisterns
- Acrylic bathtub in main bathroom
- Glass shower stall in master bathroom



These specifications and plans are provided solely for informational purposes and are subject to change.
The company will only be bound by the specifications in signed sales contract.